

aune®

**T1SE** 24Bit/DSD电子管USB解码耳放  
24Bit/DSD Tube USB DAC/Headphone Amplifier

使用手册 / Manual

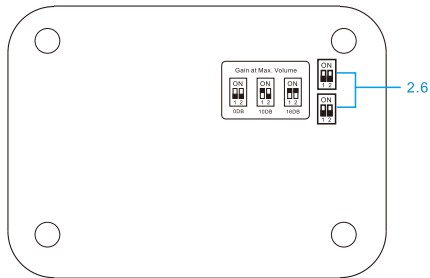
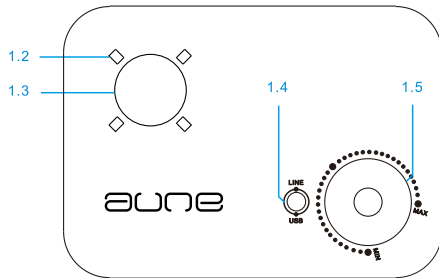
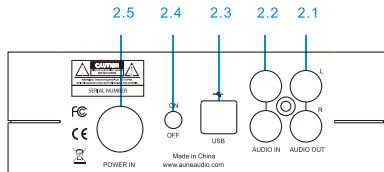
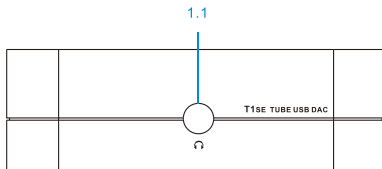
# Foreword

Dear Customers,

Thanks for purchasing the aune T series T1se 24BIT/DSD TUBE USB DAC, it is the fifth generation products of aune T1se.

We sincerely hope that this new DAC will bring you outstanding listening pleasure. To fully appreciate the capabilities of the T1se, please read the following manual carefully and completely before using the product.

## View of panel and name of each part



# NAVIGATING THE PANELS

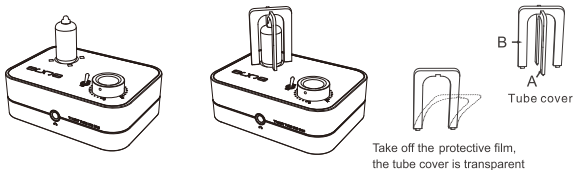
## Front And Top panel

- 1.1 Headphone output socket
- 1.2 Tube cover jack
- 1.3 Tube socket
- 1.4 LINE/USB switch
- 1.5 Volume control knob

## Rear And Bottom panel

- 2.1 AUDIO OUT
- 2.2 AUDIO IN
- 2.3 USB socket
- 2.4 SW socket
- 2.5 POWER IN — Five core power cable socket
- 2.6 Headphone amplifier output Gain adjust

⚠ CAUTION: Tube and tube cover needs to be installed by yourself. See the installation diagram below :



- 1、 First of all, install the Tube . Directly insert the tube to the socket, then install the tube cover (As the material of the tube cover is acrylic, so be carefully )
- 2、 Secondly,install tube cover A first, then vertically insert tube cover B according to the jack and the gap in tube cover B, if you want to remove the tube cover , remove the top cover first

Illustrations inside from

# Introduction

The T1se is not only a DAC, it also can

Be used as :

High quality 24Bit/DSD USB DAC

High quality tube headphone amplifier

# Specifications

Frequency response: 20Hz-20KHz

Lint out: 1.9Vrms

Suitable headphone Impedance: 30ohm~600ohm

USB support: 24BIT/192K/DSD64

Headphone Amp output( biggest is 20V) : 300ohm - 240MW

Input jack: analog RCA jack\*1 USB jack \*1

Output jack: analog RCA jack \*1 6.5mm jack \*1

Size: 135\*97\*40(mm)

Weight: 2(kg)

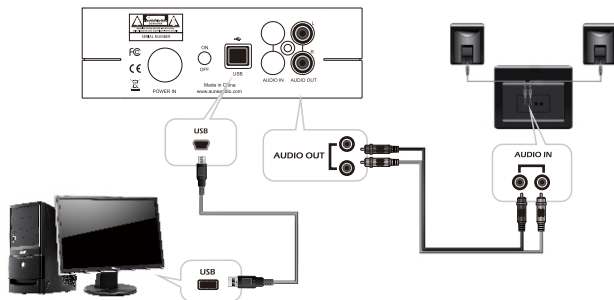
Unpack: T1se\*1 / Power adapter\*1/ Manual \*1/ USB cable \*1/  
6.5mm to 3.5mm stereo F adapter\*1

• DAC needs support DOP

# OPERATING INSTRUCTION

## USB SOUNDCARD

- 1、 Connect the device to your computer through "USB" socket (as photo 1)
- 2、 Press "LINE / USB" switch B to "USB" position
- 3、 Play music on your computer
- 4、 Connect active loudspeaker or amplifier through "AUDIO OUT" socket
- 5、 Connect headphone through Phone socket
- 6、 Adjust sound level by knob



### ⚠ CAUTION:

The tube filament will light after power on, waiting for 30 seconds after the white lamp at the bottom of the tube is lit, then T1se is working. Output delay start circuit design for T1se, and it lets the tube fully preheated and then open the output channel

photo 1

# OPERATING INSTRUCTION

## PURE HEADPHONE AMPLIFIER

- 1、 Connect your sound source to the device though the "AUDIO IN" socket (as photo 2)
- 2、 Press "LINE / USB" switch B to "LINE" position
- 3、 Plug your headphone to phone socket
- 4、 Adjust sound level by knob

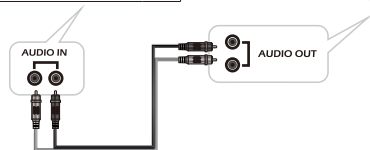
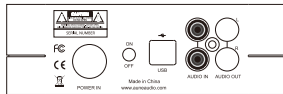


photo 2

# OPERATING INSTRUCTION

## HEADPHONE OUTPUT GAIN ADJUST

- 1、 Adjust the headphone output gain to suit the different sensitivity headphones through the headphone output gain button (as photo 3)
- 2、 Both switch "1" and "2" are OFF , gain is 0DB( "1"and "2" OFF=0DB)
- 3、 Switch "1" is ON ,switch "2" is OFF ,gain is 10DB( "1" ON and "2" OFF =10DB)
- 4、 Both switch "1" and "2" are ON , gain is 16DB ("1"and "2" ON=16DB)



0DB



10DB



16DB

photo 3



## WARNING MESSAGES

- Use exclusively recommended accessories to prevent faults, short circuits or electric shock.
- Do not expose the unit to moisture or rain.
- Do not attempt to remove parts of the body (covers); specialist repairs can be carried out only at authorized service centers

## LEGAL NOTES

- Please ensure that you observe copyright laws. The recording and publication of prerecorded media such as tapes, CDs or other published or broadcast material may contravene copyright laws.
- This also applies to all of the software supplied.
- Other names, company or product names referred to in this manual are trademarks or registered trademarks of the relevant companies.



## DISPOSAL ELECTRONIC EQUIPMENT

(Applies within the eU, and for other European countries with separated waste collection systems)

This device contains electronic components and therefore may not be disposed of as general household waste. Instead it should be disposed of at a recycling collection point provided by the local authority. This costs you nothing. Your local authority or waste disposal authority, or the shop where you bought this device, can provide you with further information on this issue.

aune

aune | 430034 WUHAN | CHINA  
Telephone: +86 027 59251012 | Fax: +86 027 85840435 | [www.auneaudio.com](http://www.auneaudio.com)